



Trac Precision Machining Limited



Interactive pdf

**Welcome to
Trac Precision Machining Limited**

Click centre of page to advance

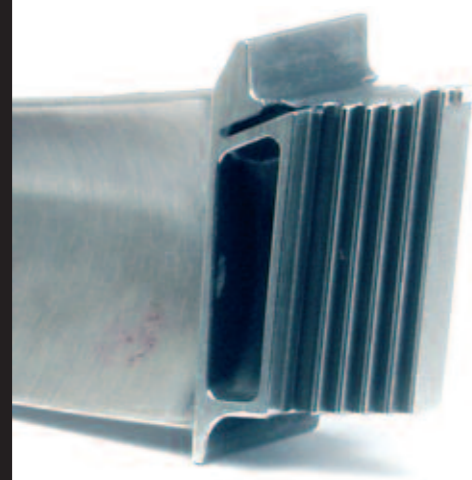
To close key 'quit' or 'esc' at any time

Engineering Excellence

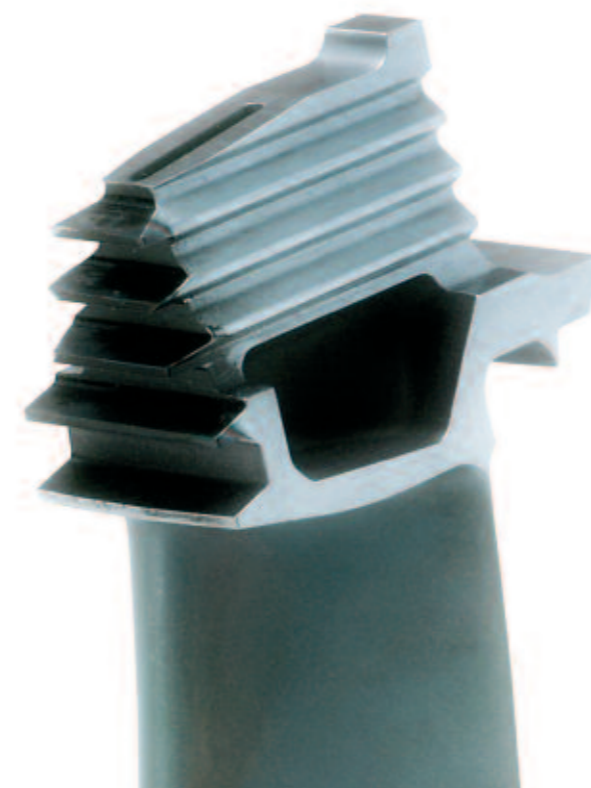
complete machining solutions for industry



More and more global buyers in aerospace and IGT are turning to Trac Precision Machining to meet their need for complex turbine airfoil components. There is good reason for this – with the technical excellence and commitment to service giving world class quality, cost and delivery.



Trac Precision Machining manufacture complex HP, IP and LP blades, vanes and segments from our modern facility in Crewe. At the heart of the process is a deep understanding of airfoil geometry and multi axis machining. We have invested in the latest technology CNC 5 axis grinders and CNC EDM equipment which are configured in flexible lean manufacturing cells where one piece flow is the standard. Combining operations to reduce set ups, visible supply chain management means we can have lead times in days not weeks. Trac Precision Machining vertically integrate the technologies of the Trac Group using tool design and manufacture with component measurement to UKAS standards to offer seamless project management with superior lead times and project costs. Our quality approvals include: ISO9001, AS 9100, NADCAP for EDM, welding and FPI. Customer approvals include Rolls-Royce, Siemens, Howmet & Alstom. A combination of CMM measurement, dedicated gauging and in cycle SPC control give consistently conforming components each day - every day.



Trac Precision Machining understand the long term nature of aerospace and IGT markets and work with key customers and suppliers to develop chains and systems that will meet customer needs for Quality, Cost and Delivery. We are committed to supporting a combination of new engine programmes through to maturity. Trac Precision Machining have a highly trained team of design and developments engineers, skilled operators, technicians, quality engineers, and administration personnel who have vast experience in the gas turbine sector.



The Trac Group

Our commitment to quality is absolute and is a feature of the goods and services we provide. Operating a comprehensive quality management system throughout the group all sites are ISO 9000 accredited and adopt best practice in all disciplines. Our strategic policy of continuous improvement enables us to deliver value for money solutions to the most complex industrial applications.



ISO9001:2000
Cert No. FM 00968



Calibration
Laboratory
No. 773

AS9100
Cert No. FM 10757

NADCAP AS7116
Cert No. 112598



Trac Precision Machining Limited

9A Marshfield Employment Park
Middlewich Road
Wolstantonwood
Crewe
Cheshire CW2 8UY
United Kingdom

Tel: 44 (0) 1270 500275
Fax: 44 (0) 1270 509702
email: tpm.sales@trac-group.com
www: www.trac-group.com

Click centre of page to return to page 01

Link to
www.trac-group.com

To close key 'quit' or 'esc' at any time